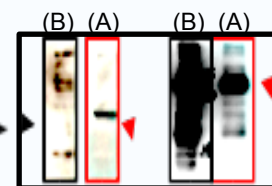


Special offers (2020)

Western blots/ECL/Stripping buffer/Protein extractions:

1) **Western blot stripping buffer (Cat: S208070):** \$85/ 500 mL ; \$160/ 2x500 mL

- * Working at room temperature for 15-30mins, **No β -mercaptoethanol.**
- * Effectively removing all 1° and 2° antibodies and ECL substrates.

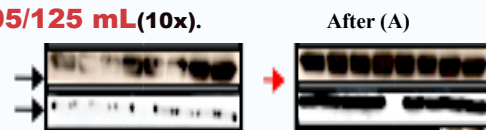


2) **Affinity enhancer buffer (Cat.: A212060)** \$95/500 mL

- * Enhancing the primary (1st) antibody **specific bindings.**
- * Removing **high-backgrounds** and non-specific bindings.

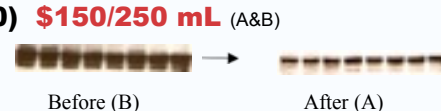
3) **Protein signal recover buffer (Cat.: R208090)** \$95/125 mL(10x).

- * Recovering protein signals from odd, empty, white bands.
- * Only 5-10 minute incubation before ECL detection.



4) **Film Background Cleaning reagents (Cat.: F208010)** \$150/250 mL (A&B)

- * Clean the backgrounds **on x-ray films**
- * Overcome the signal saturation.



5) **New SDS-PAGE gel solutions: (Pre-mix solution: ready to use)**

(Cat: WF-075 for preparing 7.5% gel)	\$95 for 500 mL (50 mini-gels)
(Cat: WF-100 for preparing 10% gel)	\$105 for 500 mL (50 mini-gels)
(Cat: WF-150 for preparing 15% gel)	\$125 for 500 mL (50 mini-gels)

- * Easy-make Western Blot mini gels:

Add **50ul** 10% fresh APS into **10ml** A&B mixture (1:1), pour into gel cassette, wait 15-20 minutes. The gel is ready to be used.

6) **Fast-ECL Western Blotting Substrate**

(Cat: E208082)	1-10 pico-gram level	\$290 /500 mL (A&B)
(Cat: E208085)	1-10 pico-gram level	\$250 /250 mL (all-in-one)



7) **New Western blot blocking buffer (Cat.: B208062T)** \$95/500 mL

- * Enhancing the primary (1st) antibody **specific bindings.**
- * Reducing the **non-specific bindings.**

Contains a combination of blockers and enhancers that effectively block the unoccupied binding sites and enhance the antibody specific bindings to improve the signal-to noise ratio.

Protein Extractions:(contained the complete **Protease/Phosphatase inhibitors**)

Prepared for EMSA, ELISA, 1D/2D electrophoreses, Western blots, TF-TF interaction arrays.

Total protein extraction kit (Cat: TP-001): \$120/50 mL(100 extracts)

Cytoplasmic and Nuclear protein extraction kit (Cat: NC-001): \$180/50 extractions

Cytosolic, Mitochondrial and Nuclear protein extraction (Cat: MCN-002): \$200/50 extractions

Cytoplasmic, Membrane and Nuclear protein extraction (Cat: MCN-003): \$200/50 extractions

Cytoskeleton, Cytoplasmic and Nuclear protein extraction (Cat: NCS-001): \$200/50 extractions

Cytosolic, Lysosome and Nuclear protein extraction (Cat: LCN-001): \$200/50 extractions

Cytosolic, Peroxisome and Nuclear protein extraction (Cat: PCN-002): \$200/50 extractions

Cytosolic, Mitochondrial, Membrane & Nuclear protein extraction(Cat: MMCN-004): \$300/50 Extracts