

Protein Standard Ladders (LP-313):

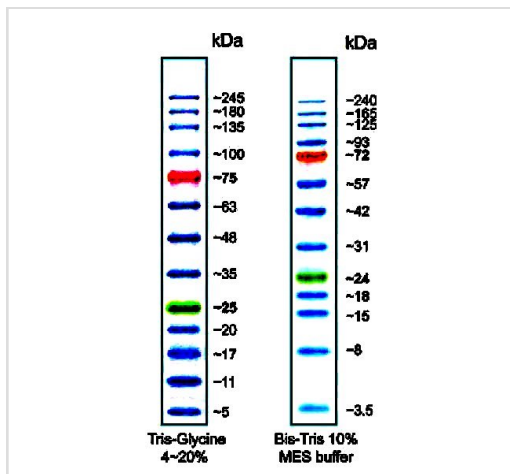
Size: 500ul

Storage: at -20°C

Protein Standard Ladders (Cat.#:LP-313) contains 13 pre-stained protein bands (5, 11, 17, 20, 25, 35, 48, 63, 75, 100, 135, 180 and 245kDa) with triple colour dyes (the green band at 25kDa and the red band at 75kDa)

Suggested Protocol:

1. Thaw the protein ladders tube on ice.
2. Pipette 3ul-5ul protein ladders into a gel lane as a standard protein marker.
3. Load samples and run the gel using your standard protocol.



Precautions and Disclaimer: This product and procedure described are intended for R&D use only. Purchase of this product does not convey a license to perform any patented process.

ZmTech Scientific endeavours to assist clients based on the highest level of customer service, competitive pricing and customer satisfaction. Our mission is: Convenience, Speed, Safety and Economy.