

DNA Standard Ladders (LD-1000/FD-1000):

Size: 500ul (50ug)

Storage: at -20°C

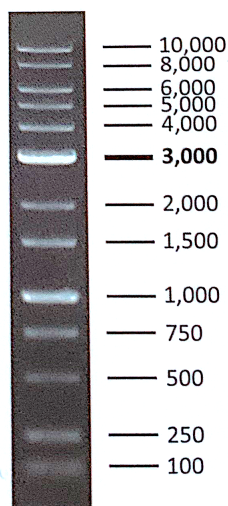
Note:*This product is stable at Room Temperature (25°C) for 6-8 months.

1kb-DNA Standard Ladders (Cat.#:LD-1000) contains 13DNA bands: 100bp, 250bp (50ng), 500bp, 750bp (50ng), **1kb** (80ng), 1.5kb, 2kb, **3kb** (100ng), 4kb, 5kb, 6kb, 8kb (30ng) and 10kb.

Fluo-DNA Ladders (1kb) (Cat.#:FD-1000) contains 13DNA bands: 100bp, 250bp (50ng), 500bp, 750bp(50ng), **1kb** (80ng), 1.5kb, 2kb, **3kb** (100ng), 4kb, 5kb, 6kb, 8kb (30ng) and 10kb.

Suggested Protocol:

1. Thaw the DNA ladder tube on ice.
2. Pipette 5ul DNA ladder into a gel lane as a standard DNA marker.
3. Mix 10ul your DNA sample with 2ul of 6X DNA Loading buffer.
4. Load samples and run the gel using your standard protocol.
5. Visualize DNA under UV or blue light transilluminator/imager.



1kb-DNA ladders (5ul** LD-1000 in 1% TAE agarose gel)**

1kb-Fluo-DNA ladders (2.5ul** FD-1000 in 1% TAE agarose gel)**

Precautions and Disclaimer: This product and procedure described are intended for R&D use only. Purchase of this product does not convey a license to perform any patented process.