

DNA Standard Ladders (LD-100/LD-1000):

Size: 500ul (50ug)

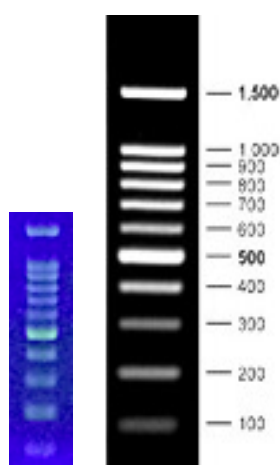
Storage: at -20°C

100bp-DNA Standard Ladders (Cat. #:LD-100) contains 11 DNA bands (100bp, 200bp, 300bp, 400bp, 500bp, 600bp, 700bp, 800bp, 900bp, 1kb and 1.5kb)

1kb-DNA Standard Ladders (Cat. #:LD-1000) contains 13 DNA bands (250bp, 500bp, 750bp, 1kb, 1.5kb, 2kb, 2.5kb, 3kb, 4kb, 5kb, 6kb, 8kb and 10kb)

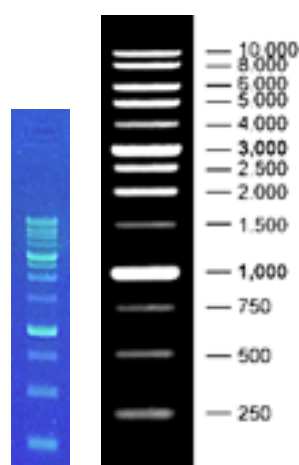
Suggested Protocol:

1. Thaw the DNA ladder tube on ice.
2. Pipette 5ul DNA ladder into a gel lane as a standard DNA marker.
3. Mix 10ul your DNA sample with 2ul of 6X Fluo-DNA Loading buffer (LB-001B).
4. Load samples and run the gel using your standard protocol.
5. Visualize DNA under UV or blue light transilluminator/imager.



100bp-DNA ladders

1.5% Agarose gel



1kb-DNA ladders.

2% Agarose gel & 1.5% Agarose gel

Precautions and Disclaimer: This product and procedure described are intended for R&D use only. Purchase of this product does not convey a license to perform any patented process.

ZmTech Scientific endeavours to assist clients based on the highest level of customer service, competitive pricing and customer satisfaction. Our mission is: Convenience, Speed, Safety and Economy.