

## Enhanced Standard DNA Ladders

### Product Information:

**Cat.: FD-100** contains 100, 200, 300, 400, 500, 600, 700, 800bp, 900bp, 1kb and 1.5kb sizes.

**Cat.: FD-1000** contains 250, 500, 750bp, 1kb, 1.5kb, 2kb, 2.5kb, 3kb, 4kb, 5kb, 6kb, 8kb & 10kb sizes.

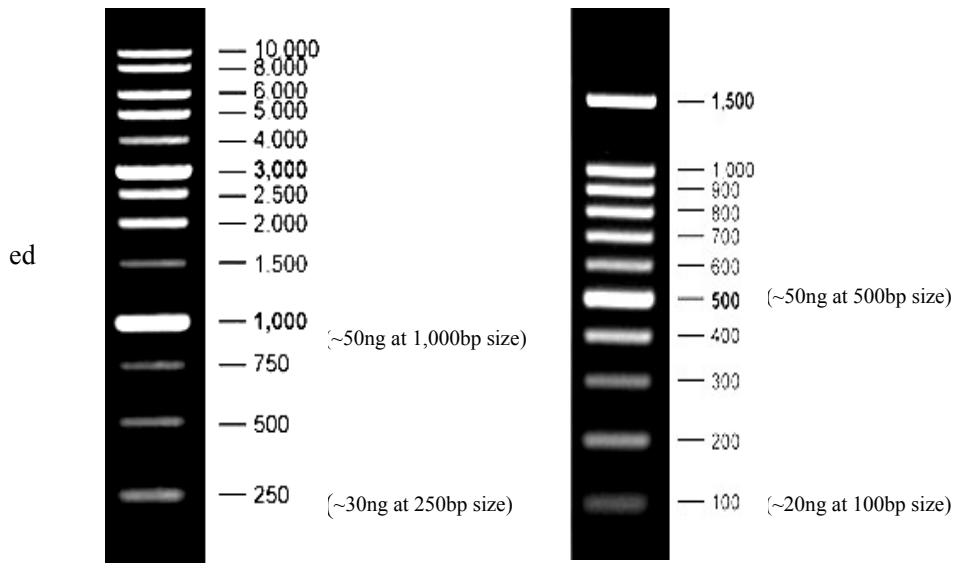
### Features and Benefits:

- Sharp bands and enhanced DNA ladder.
- Ready-to-use premixed with 1x Green DNA Loading Dye for direct loading.
- Size: 500ul (50ug)

### Suggested Protocol:

1. Thaw the DNA ladder tube on ice.
2. Pipette **5ul DNA ladder** into a gel lane as a standard DNA marker
3. Mix 10ul your DNA sample with 2ul of 6X DNA Loading buffer
4. Load samples and run the gel using your standard protocol.
5. Visualize DNA by staining with ethidium bromide or with Fluo-DNA dyes.

**Storage:** store DNA ladder at 4° C for frequent use or at -20° C for month/year use.



**1kb DNA ladder**

1.0% Agarose gel (5ul/loading)

**100bp DNA ladder**

1.5% Agarose gel (5ul/loading)

### Precautions and Disclaimer:

This product and procedure described are intended for R&D use only. Purchase of this product does not convey a license to perform any patented process.

**Contact us,** Phone: 514-702 7702 Web: [www.zmtechscience.com](http://www.zmtechscience.com) Email: [order@zmtechscience.com](mailto:order@zmtechscience.com) (For ordering)